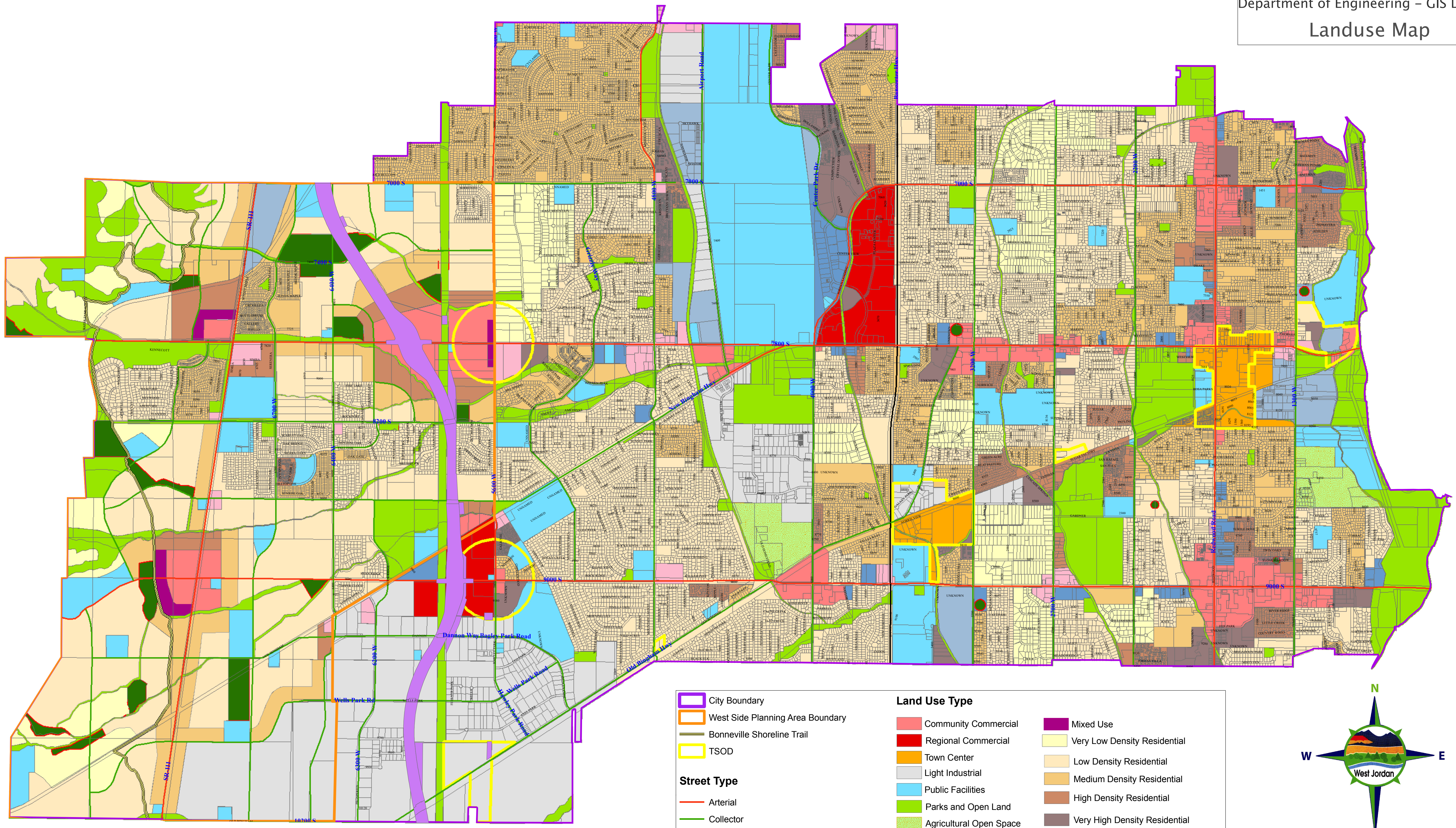


City of
West Jordan
Department of Engineering – GIS Division
Landuse Map



<p>City Boundary</p> <ul style="list-style-type: none"> City Boundary West Side Planning Area Boundary Bonneville Shoreline Trail TSOD <p>Street Type</p> <ul style="list-style-type: none"> Arterial Collector UDOT Expressway <p>Other</p> <ul style="list-style-type: none"> Mt. View Corridor Future Annexation Area 	<p>Land Use Type</p> <table border="0"> <tr> <td> Community Commercial</td> <td> Mixed Use</td> </tr> <tr> <td> Regional Commercial</td> <td> Very Low Density Residential</td> </tr> <tr> <td> Town Center</td> <td> Low Density Residential</td> </tr> <tr> <td> Light Industrial</td> <td> Medium Density Residential</td> </tr> <tr> <td> Public Facilities</td> <td> High Density Residential</td> </tr> <tr> <td> Parks and Open Land</td> <td> Very High Density Residential</td> </tr> <tr> <td> Agricultural Open Space</td> <td> Professional Office</td> </tr> <tr> <td> Future Park</td> <td> Research Park</td> </tr> <tr> <td></td> <td> Neighborhood Commercial</td> </tr> </table>	 Community Commercial	 Mixed Use	 Regional Commercial	 Very Low Density Residential	 Town Center	 Low Density Residential	 Light Industrial	 Medium Density Residential	 Public Facilities	 High Density Residential	 Parks and Open Land	 Very High Density Residential	 Agricultural Open Space	 Professional Office	 Future Park	 Research Park		 Neighborhood Commercial
 Community Commercial	 Mixed Use																		
 Regional Commercial	 Very Low Density Residential																		
 Town Center	 Low Density Residential																		
 Light Industrial	 Medium Density Residential																		
 Public Facilities	 High Density Residential																		
 Parks and Open Land	 Very High Density Residential																		
 Agricultural Open Space	 Professional Office																		
 Future Park	 Research Park																		
	 Neighborhood Commercial																		



All Locations Approximate
Not For Use As Legal Property Description
or Engineering Design Purposes
Some Items Subject to Change Without Notice

Copyright West Jordan City GIS-CAST
This map (C:\ARCMAP\landuse24x36_June12_08.MXD)
produced on June 12, 2008